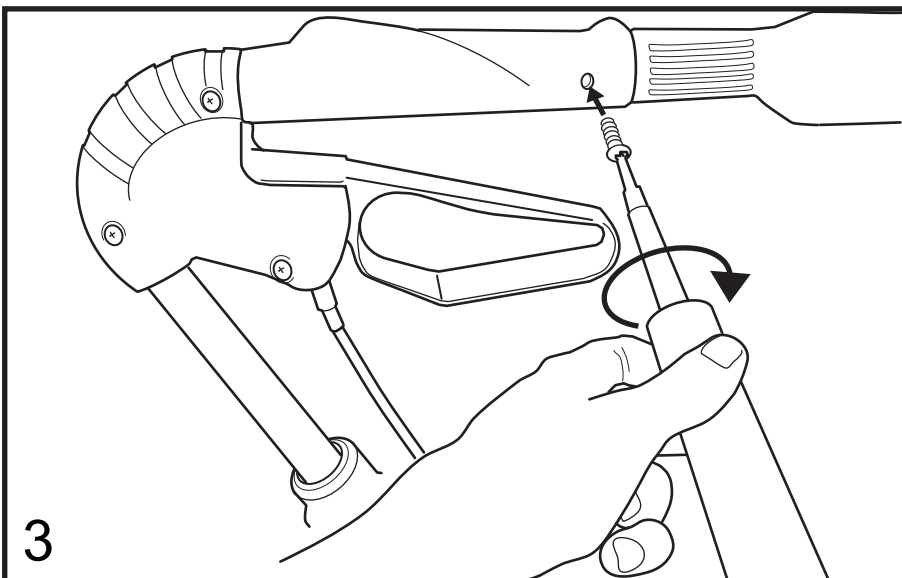
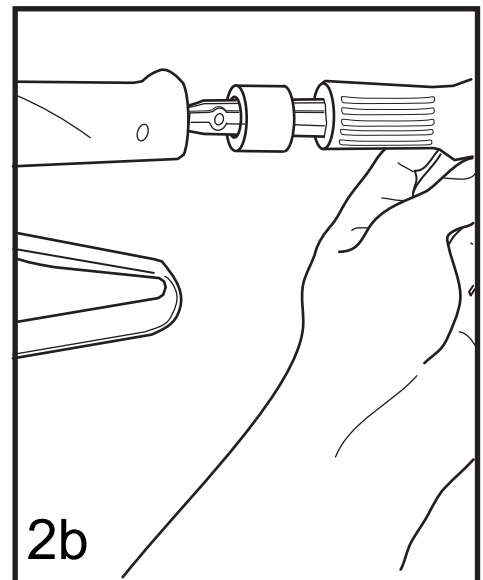
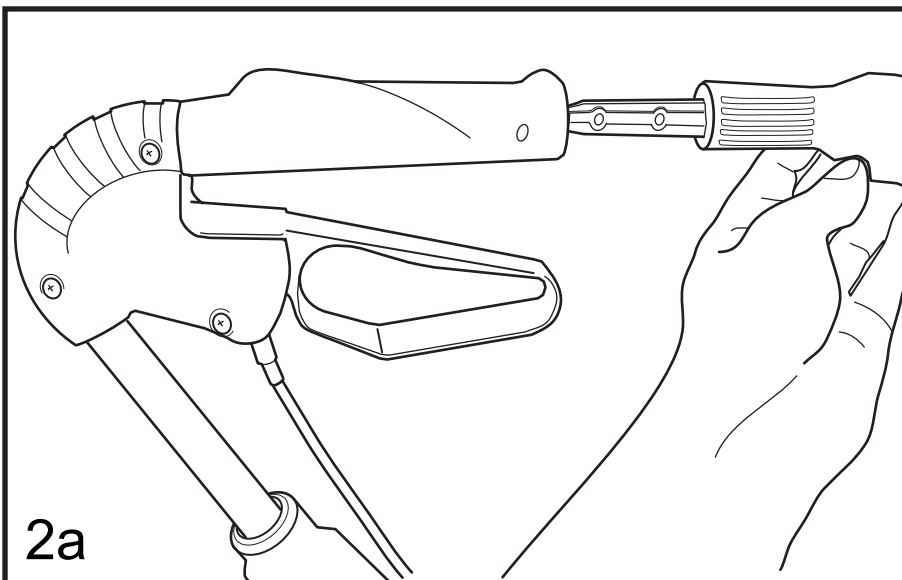
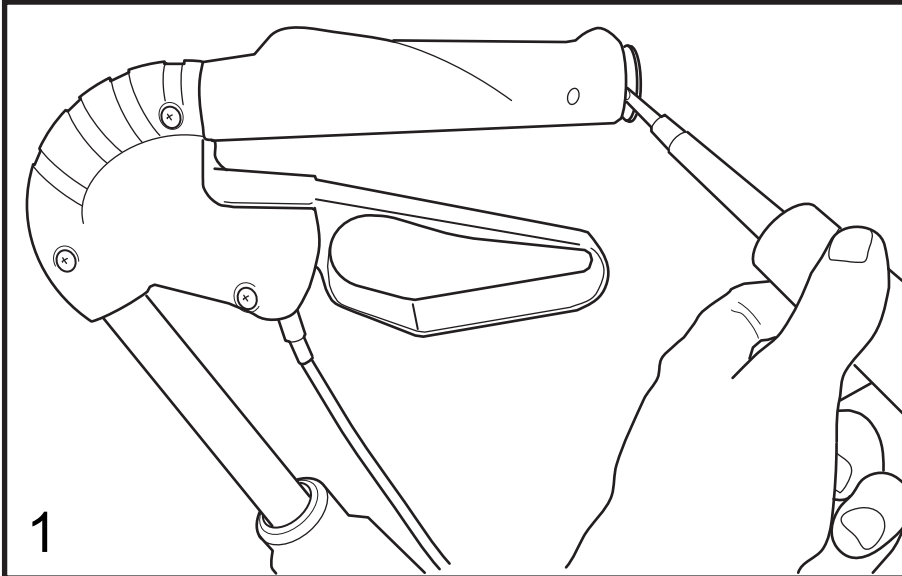


**RYGGBAND  
BACKREST  
RÜCKENGURT  
SANGLE DOSSIER**

**Art. no  
12600  
12600-DHCP**

**Monteringsanvisning  
Montageanleitung**

**Assembly instruction  
Instructions de montage**



DOLomite AB  
V.Götgatan 5  
S-334 32 ANDERSTORP

TEL +46 (0)371 58 84 00  
FAX +46 (0)371 170 90  
www.dolomite.se  
e-mail: info@dolomite.se