

Transporting the occupied wheelchair in a vehicle

Insert for User Manual

 küschall® **K-SERIES**

Version 2012-06

 küschall®
designed for life

Transporting the occupied wheelchair in a vehicle

Even when the *küschall*[®] K-Series wheelchair is properly secured and the following rules are met, injuries to passengers may occur in a collision or sudden stop. Therefore *Küschall* strongly recommends transferring the wheelchair user to the vehicle seat with the seatbelt on.

Do not make alterations or substitutions to points of the wheelchair (structure, frame or parts) without the written consent of *Küschall* AG.



WARNING! Risk of serious injury or death

To use the wheelchair as a seat in a vehicle the backrest height must be at least 400 mm.

To transport the wheelchair with user in a vehicle, a restraint system must be installed in the vehicle.



WARNING!

If, for some reason, it is impossible to transfer the wheelchair user to a vehicle seat, the wheelchair can be used as a seat in a vehicle if the following procedures and regulations are followed.

- The wheelchair must be secured in the vehicle with a 4-point wheelchair restraint system.
- The user must wear a 3-point passenger restraint system secured to the vehicle.
- The user must be additionally secured with a posture belt in the wheelchair.

Both the 4-point wheelchair restraint system and the 3-point passenger restraint system must be approved according to ISO-10542-2.



WARNING!

- Before journey contact transporter and request information about the capability for the below required equipment.
- Make sure there is sufficient free space around the wheelchair and user to avoid the user making contact with other vehicle occupants, unpadding parts of the vehicle, wheelchair accessories or anchor points of the restraint system.



WARNING!

- Make sure the tie-down points at the wheelchair are not damaged and that the parking brakes are fully functional.
- It's recommended to use puncture-proof tyres during transport to avoid brake problems due to reduced tyre pressure.



WARNING!

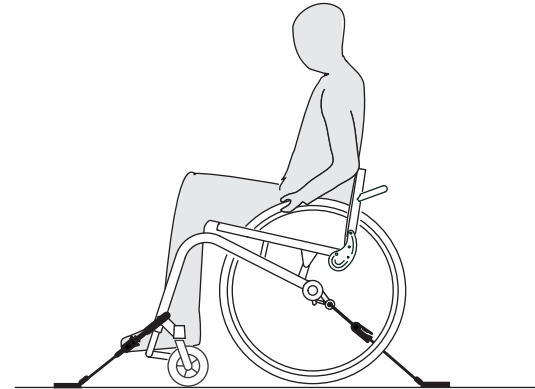
- Injury or damage may occur from wheelchair components or accessories loosened during a collision or sudden stop.
- Ensure all removable or detachable components and accessories are removed from the wheelchair and securely stored in the vehicle.
 - It is essential to have your wheelchair checked by a specialist dealer after an accident, collision etc.



IMPORTANT!

- It is recommended that training be given on the proper use of a restraint system product.
- Refer to the user manuals supplied with the restraint systems.
 - The following illustrations may differ depending on the restraint system supplier.

Securing the wheelchair with a 4-point restraint system



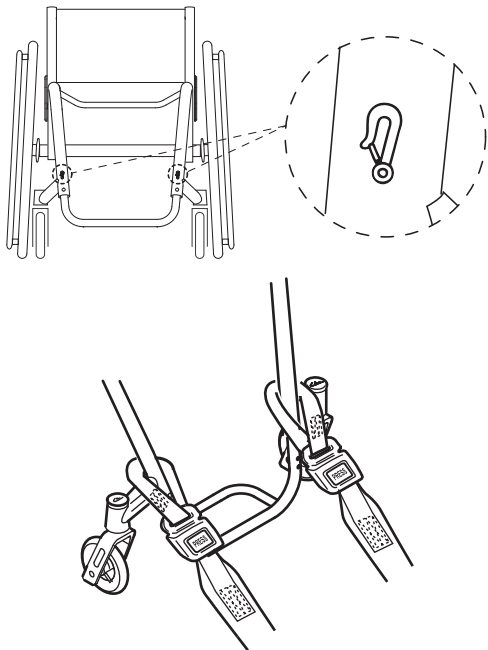
WARNING!

- Place the wheelchair with the user forward-facing in direction of vehicle travel.
- Apply the wheelchair parking brakes.
- Activate antitipper (if installed).

The wheelchair tie-down positions where the restraint system straps must be placed are marked with snap hook symbols (see following figures and section Technical Data).

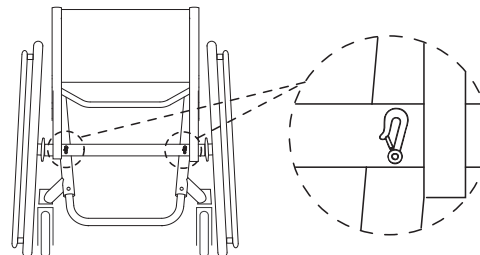
- Using the front and rear straps of the 4-point restraint system, secure the wheelchair to the vehicle mounted rails. Refer to the user manual supplied with 4-point restraint system.

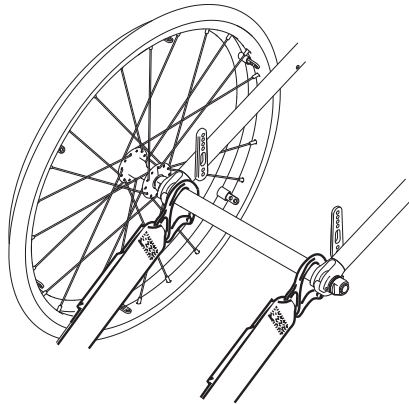
Front side tie-down positions for belt straps



- Attach the front straps above the castor supporters as shown in the two figures above (see location of the attachment labels).
- Attach front straps to the rail system referring to best practice recommended instructions from the safety belt manufacturer.
- Release parking brakes and apply tension front straps by pulling the wheelchair backwards from the rear.
- Re-apply parking brakes.

Rear side tie-down positions for snap hooks





- Attach the snap hooks to the axle right next to the axle holders as shown in the two figures above (see location of the attachment labels).
- Attach rear straps to the rail system referring to best practice recommended instructions from the safety belt manufacturer.
- Tighten the straps.

! **IMPORTANT!**
 - Make sure that the snap hooks are covered with slip resistant material to avoid laterally slipping on the axle.

! **IMPORTANT!**
 - Check the plungers are fully engaged on both sides and located in the same position of the cut-out section of the rail.
 - Make sure that the angle between the rails and the straps lies between 40° and 45°.

Fit posture belt

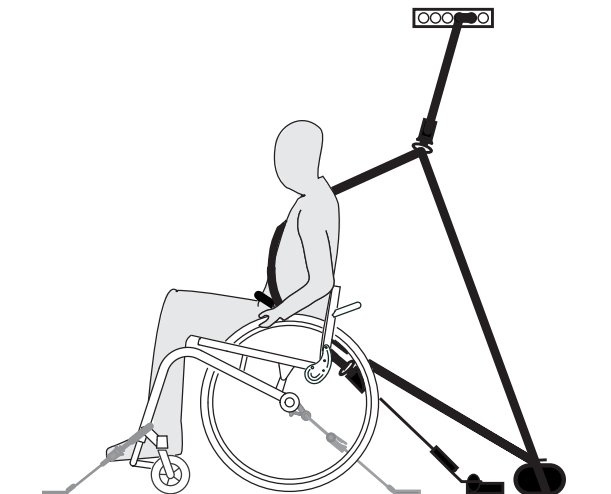


WARNING!

The posture belt must be used in addition to but never as a substitute for an approved passenger restraint system (3-point belt).

- Adjust posture belt to fit the wheelchair occupant, see section 4.12 Accessories; posture belt.

Fastening the 3-point passenger restraint system



! **IMPORTANT!**

The illustration above may differ depending on the restraint system supplier.



WARNING!

- Ensure the 3-point passenger restraint system fits as tightly across the user's body as possible without discomfort and no part is twisted.
- Ensure the 3-point passenger restraint system is not held away from the user's body by parts of the wheelchair such as armrests or wheels etc.
- Ensure the user restraint has a clear path from the user to the anchor point without interference by any part of the vehicle, wheelchair, seating or accessory.
- Ensure the lap belt fits snugly over the occupant's pelvis and is not allowed to ride up into the abdominal area.
- Ensure the user is able to reach the release mechanism unaided.



- Attach the 3-point passenger restraint system referring to the user manual supplied with your 3-point restraint system.



IMPORTANT!

-Apply the pelvic belt of the 3-point passenger restraint system low across the pelvis so that the angle of the pelvic belt is within the preferred zone (A) of 30° to 75° to the horizontal. A steeper angle is preferred, but never exceeding 75°.

